



# School Committee Meeting Presentation

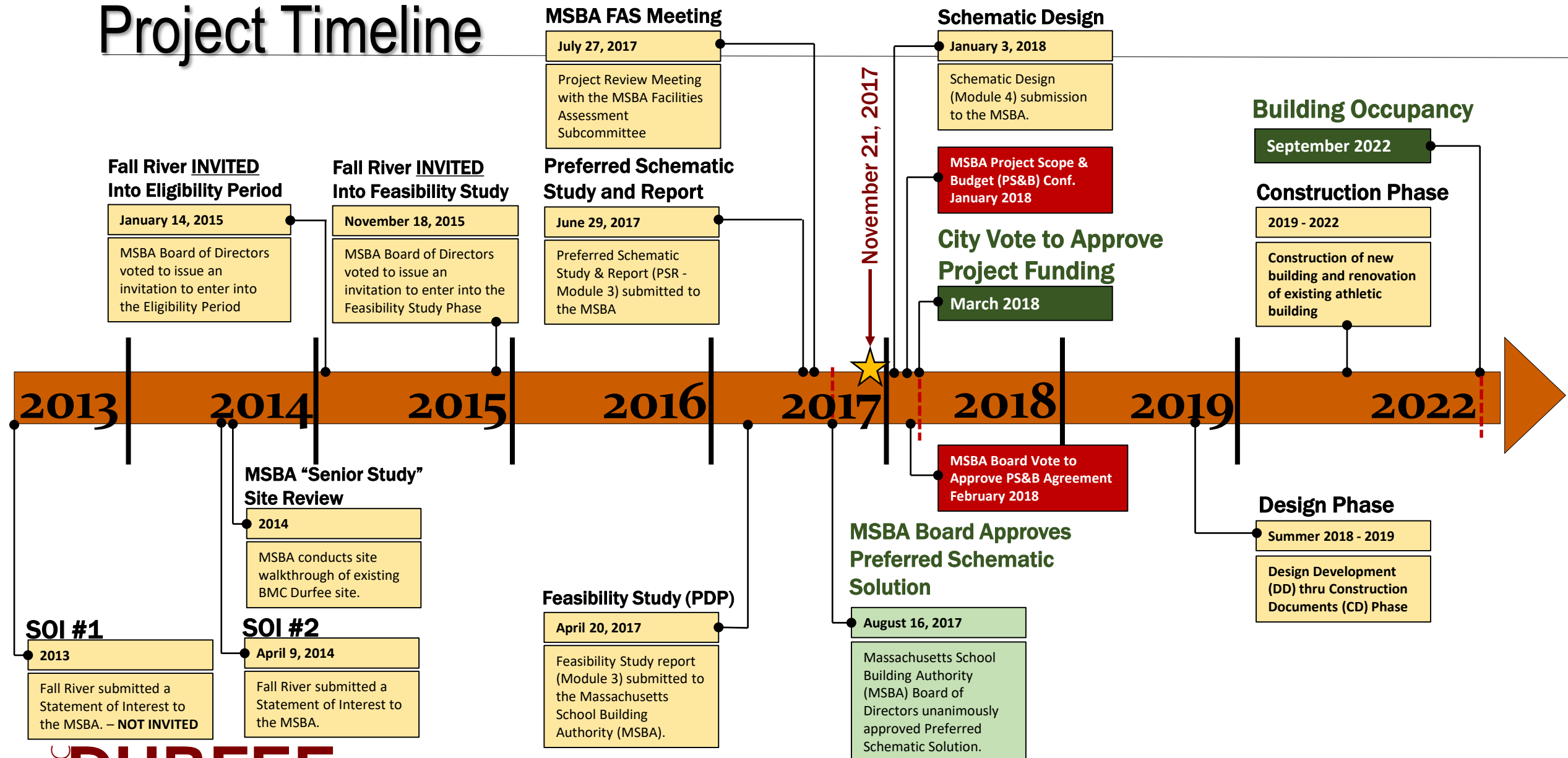
November 21, 2017



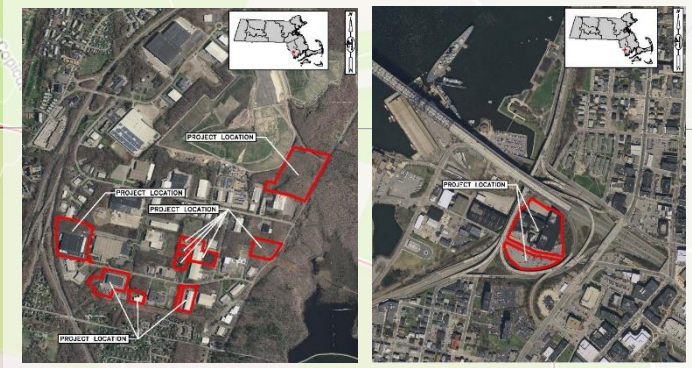
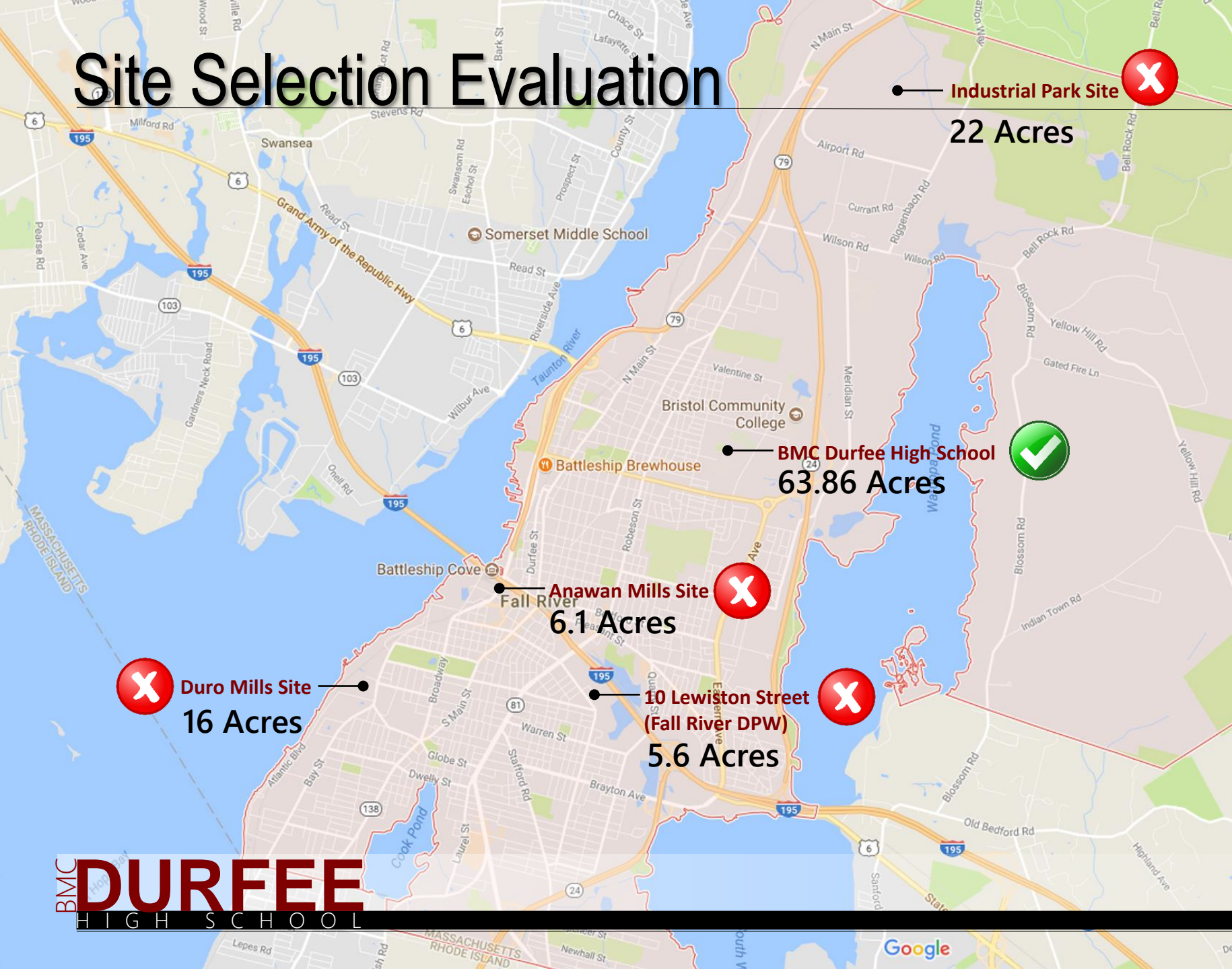
**BMC** **DURFEE**  
HIGH SCHOOL



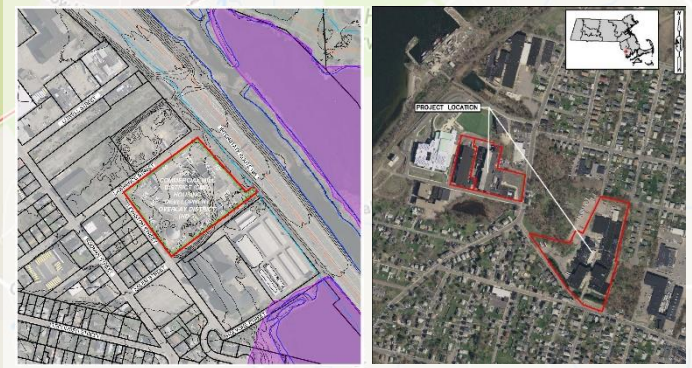
# Project Timeline



# Site Selection Evaluation



- Site Too Small (not enough buildable area)
- Environmental Contamination
- Additional Cost to Purchase
- Zoning Restrictions
- Abutting Properties (NOT conducive to a school environment)



**BMC DURFEE**  
HIGH SCHOOL



# Summary of Options Studied – Existing Durfee Site

**OPTION 1A**



**\$\$\$\$\$**

**OPTION 1C**



**\$\$\$**

**OPTION 1B**



**\$\$\$\$**

**OPTION 1D**



**\$\$\$\$\$\$\$**

**OPTION 1E**



**\$\$\$**

**OPTION 2A**



**\$\$\$\$\$\$\$**

**OPTION 2B**



**\$\$\$**

RENOVATION & NEW CONSTRUCTION

NEW CONSTRUCTION

# Schematic Design Phase

## Since the Last School Committee presentation.....

- Building Programming Meetings with User Groups
  - Administration/Security
  - Guidance
  - Nurse
  - Special Education
  - Athletics / Physical Education
  - Fine Arts / Performing Arts
  - Music
  - Construction Craft
  - Culinary Arts / Tradewinds
  - Visual Design Communications
  - Cosmetology
  - FRED TV
  - Science (general education, observatory, planetarium)
  - Health Assisting
  - Environmental Science
  - Engineering Technology
  - Early Education & Care
  - Marketing
  - Library Media Specialist
  - General classrooms
  - Student/Staff Collaboration spaces
  - ROTC
  - Custodial / Maintenance

Over  
**75**  
Meetings

# Schematic Design Phase

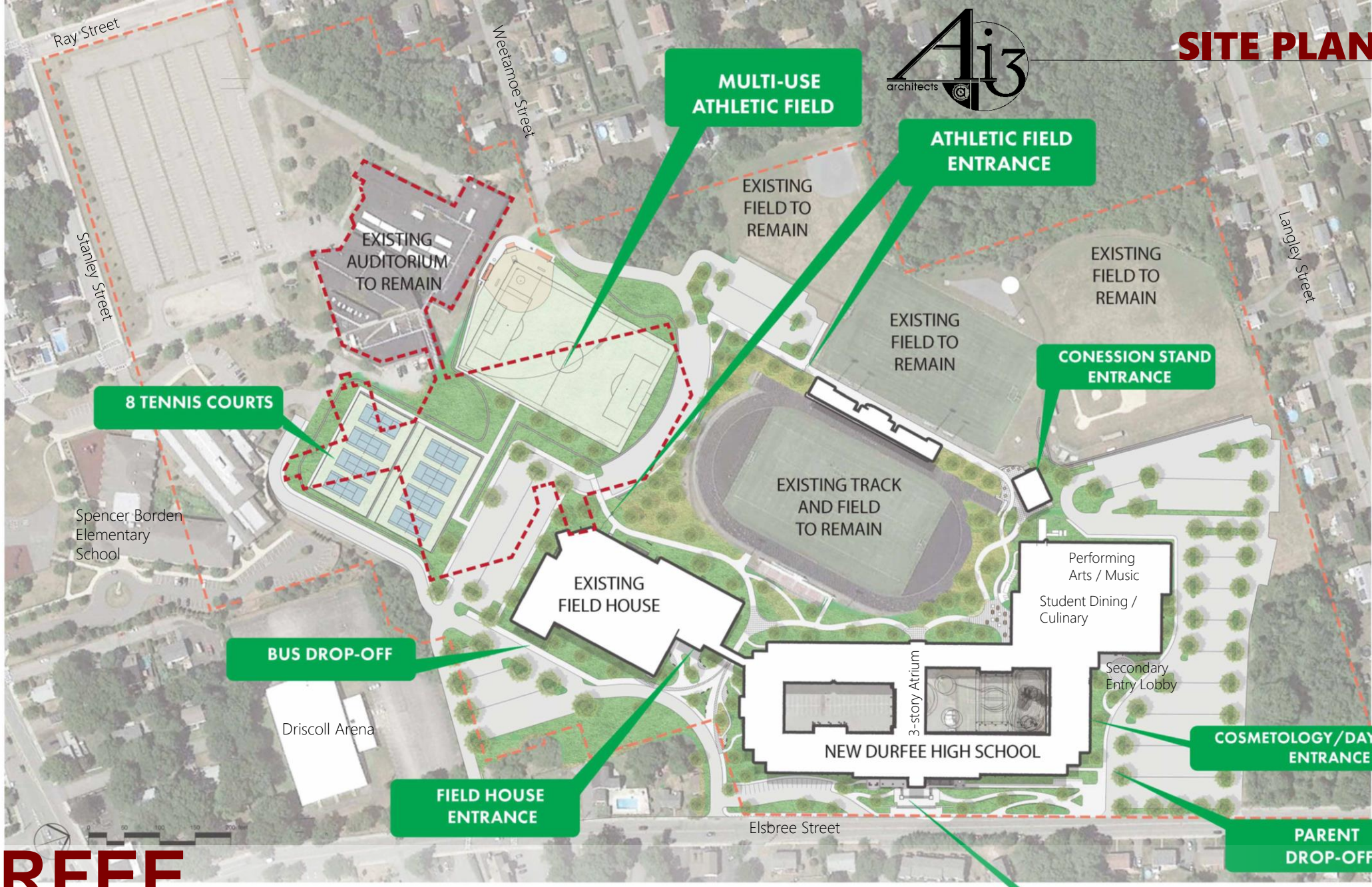
---

## Since the Last School Committee Presentation.....

- Mechanical / Electrical / Plumbing / FP Coordination Meetings with District & City Personnel
- Technology & Security Coordination Meetings with District & City Personnel
- Fall River Fire and Police Coordination Meetings
- Utility Coordination meeting with Fall River Water / Sewer Department
- Community Forums
- Food Service Meetings with Whitson's
- Bells Committee Meetings
- Observatory / Historic Telescope Meeting
- Sub-surface Investigation Coordination Meetings
- Fall River Office of Economic Development Presentation
- Peoples Incorporated Meeting related to Early Education & Care spaces

Over  
**75**  
Meetings









# CONCEPTUAL 3D RENDERING

ELSBREE STREET LOOKING SOUTH TOWARD MAIN ENTRANCE



- New core academic building along Elsbree Street with a pedestrian friendly entry plaza.
- Identifiable, inviting, secure entrance.
- Central Organizing Atrium – Celebrating the History of Fall River and BMC Durfee High School
- Use of low maintenance, durable materials (Brick, Stone, Fiberglass)
- Architectural cues from Old Durfee on Rock Street
  - Classical design elements – symmetrical organization, bell tower, observatory tower (historic telescope), arched windows, hipped roof, etc.
  - Building on plinth
  - Re-use and integration of historic bells, clock faces, granite benches, pavers, and restored clavier.



**BMC DURFEE**  
HIGH SCHOOL





# CONCEPTUAL 3D RENDERING

ELSBREE STREET LOOKING NORTH TOWARD MAIN ENTRANCE



**BMC DURFEE**  
HIGH SCHOOL





Examples...

- Flint Cotton Mill
- Borden Mills
- American Printworks
- Sanford Spinning Company



















---

Proposed  
**BMC Durfee High School**

2,570 students

501,330  
Gross Square Footage

**Total Project Cost**      Approximately  
**\$260 Million**

**City Portion**      Approximately  
**\$94-99 Million**